



 **Built Right**  **On Time**  **On Budget**



# On Time



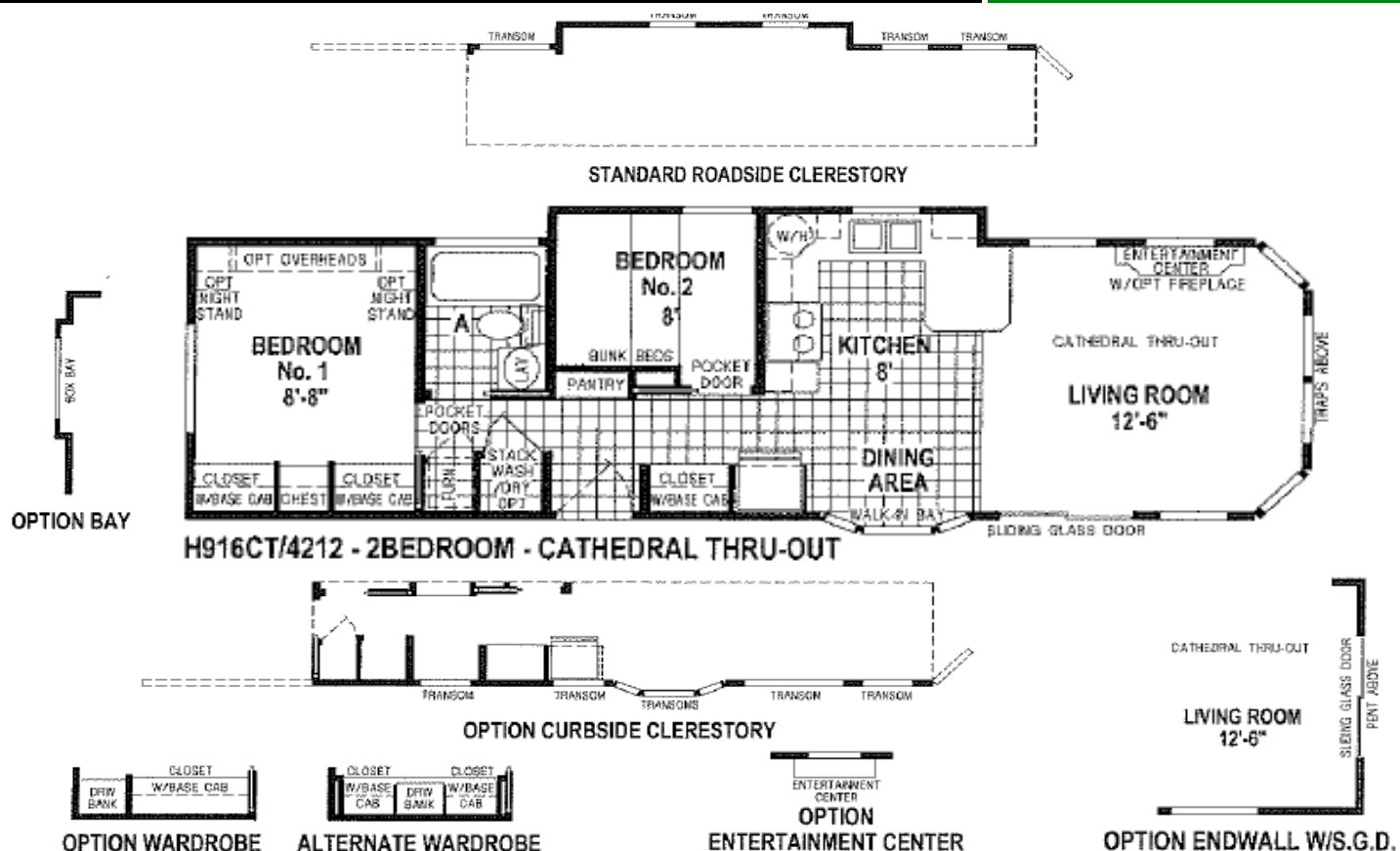
## On Budget



***\*Pictures above may differ from the floor plan on this brochure.***

# H916CT

504sqft ~ 2 Bedroom



**www.vimodularhomes.com**

250-324-2288



# Key Features



## *Park Model Villa Series Standards*

### **Living Areas:**

Carpet  
Valances with Wood Blinds  
Chandelier Dining Light  
TV Jack  
Phone Jack  
52" White Paddle Fan with Lights

### **Kitchen:**

Vinyl Flooring  
Flat Panel Cathedral Top Oak Cabinets  
with Hidden Hinges  
Lined Overhead Cabinets  
Adjustable Overhead Shelves  
Counter Top Backsplash  
Stainless Steel Double Sink  
Single Lever Faucet with Sprayer  
18 cu.ft. Double Door Frost Free Refrigerator  
30" Deluxe GAS Range with  
Microwave Range Hood  
Overhead Cabinet Above Refrigerator  
3/4" Adjustable Shelves  
USB Port

### **Bathrooms:**

Vinyl Flooring  
Decorative Mirror with Strip Light  
Towel Bar and Paper Holder  
54" One-Piece Fiberglass Tub/Shower Combo  
with Over Drape  
Flat Panel Cathedral Top Oak Cabinets  
China Lavy Bowl with Pop-up Drain  
Elongated Toilet Bowl  
Counter Top Backsplash

### **Bedroom:**

Carpet  
Valance with Metal Mini-Blinds  
Ceiling Light  
Wardrobe with Drawers Below  
Ventilated Wire Shelving  
TV Jack  
Phone Jack

### **Additional Features:**

CSA-A241 Approved  
Finished Drywall Throughout w/Rounded Corners  
6 Panel Doors with 3 Hinges  
Brushed Chrome Lever Door Handles and Hinges  
7'6" Interior Sidewalls  
Painted Baseboard Trim  
Silent Rocker Light Switches  
6 lb. Carpet Pad  
20 Gallon Electric Water Heater with  
Interior on/off Switch  
Water Shut-off Valves Throughout  
56K BTU GAS Furnace  
Fiberglass Board Heat Ducts  
Toe Kick Heat Registers in Kitchen and Bath  
50 AMP Electrical Panel  
Power Cord  
40 lb. Engineered Panel  
2x4 Sidewall, 16" O.C.  
2x8 Floor Joist, 16" O.C.  
72" Sliding Glass Door (Per Floor Plan)  
36" 6 Panel Rear Door with Deadbolt  
(Per Floor Plan)  
Exterior Light at All Exterior Doors  
Exterior GFI  
25 Year Composition Roof  
Roof Ice Guard  
12" Front and Rear Eaves  
8" Sidewall Eaves  
Cathedral Ceiling Throughout  
Fire Extinguisher  
Smoke Detector with Battery Backup and False  
Alarm Control  
GAS Detector with GAS Appliances  
Detached Hitch  
Hardie CemPanel Exterior with Hardie  
CemPlank Wainscot  
Low "E" Vinyl Framed Dual Glazed Windows  
Egress Windows in Bedrooms  
R-33, R-11, R-14 Insulation

