



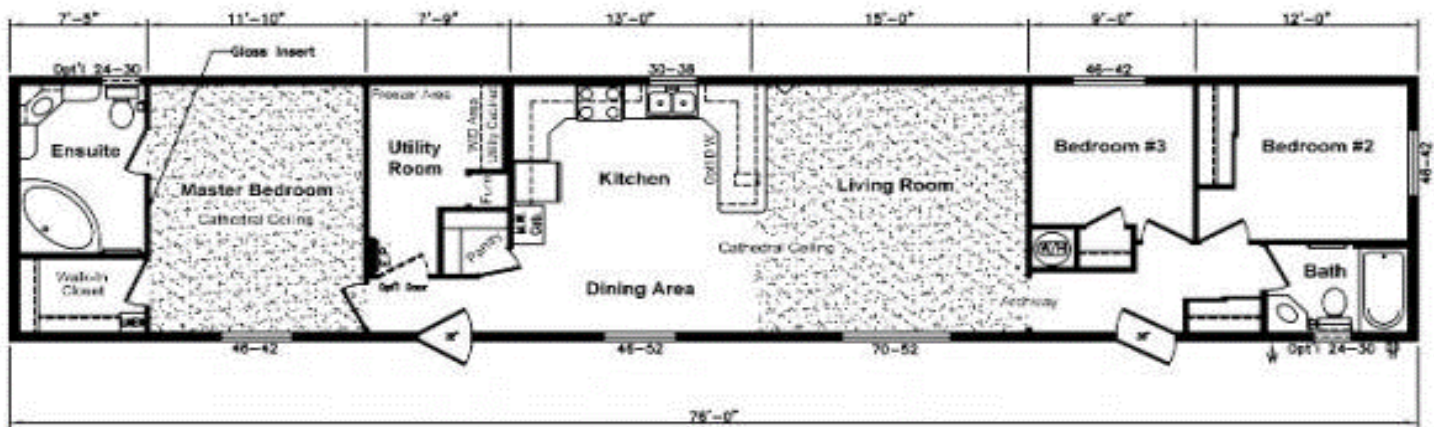
Pro Modular Housing **Solutions**



**Picture above may differ from the floor plan and Options listed on this brochure.*

LME-007

1216 Sq.ft.



Popular Options:

*Bay Window
Frosted Pantry Door
Utility Interior Door*

*Banjo Counter Top
Shutters
Polyure Stone*



www.promodularsolutions.com

306-216-6261



Pro Modular Housing Solutions

Limited Edition 16' Wide Standards

Exterior:

30-Year Architectural Fiberglass Shingles
Engineered Roof Trusses
Perimeter Eave & Continuous Ridge Venting
Maintenance Free Full Vinyl Siding
12" Residential Overhang on 3 Sides
12' Dormer Over Living Room Window
Smart Start Fascia, Corners & Pillars
at Living Room Windows
8' Walls Ceilings
2x6 Outside Walls at 16" O.C.
3/8 OSB Sheathing on Inside & Outside of
Exterior Walls
2x10 Floor Joists
Weatherproof Outside Receptacle Protected w/GFI
Frost Free Tap c/w Check Valve
White Coach Lights at all Doors & on Front of Home

Interior:

T&G OSB Floor Decking - Glued and Screwed
R-40 Insulation in Ceiling
R-20 Insulation in Walls
R-26 Insulation in Floors
6 Mil Poly Vapour Barrier in Ceilings & Sidewalls
Spraytexed 1/2" SR Gyproc Ceilings
Cathedral Ceiling in Living Room, Kitchen, Dining
Room, Utility Room, MBedroom & En Suite
Polyurethane Carpet in Living Room & MBedroom
No Wax Vinyl Flooring
Copper Wiring Throughout
Utility Cabinets Above Washer & Dryer
Wire Closet Shelving
Pewter Hardware Package Throughout
Designer Drapery Package including Blinds
on all Windows
Etched Mirror Plaque in Front Entry
Microwave Shelf Built into Upper Kitchen Cabinets
Corner Pantry
Banjo Counter Tops in Both Baths (Per Floor Plan)
Lever Door Handles Throughout
Trim Package #2

Kitchen:

18 Cu Ft Two Door Frost Free Fridge - White
30" Glass Door Electric Range - White
Dishwasher - White
Double Stainless Steel Kitchen Sink
Single Lever Faucet
Two Speed Range hood Vented to exterior
Cabinets with Framed Raised Panel Doors
Rolled Drawer Hardware

Bathrooms:

GFI Receptacle in Bathroom
Dehumidistat on Main Bath Fan
One Piece Wall Tub/Shower in Main Bath
Jetted Oval wall Tub in En Suite Bath
White Bath Fixtures
Shower Rod & Curtain in all Bathrooms
Pewter Towel Bar and Paper Holder
Shut-off Valves on All Fixtures
Framed Raised Panel Cabinet Doors

Doors:

36" Steel Insulated Front Door c/w Peephole
32" Steel Insulated Rear Door c/w Peephole
Aluminum Storm Doors at Front & Rear Entry
Pre-Finished Interior Doors

Windows:

White PVC "Low E" Windows with Screens

Utilities:

Smoke/CO Alarms with Battery Back Up in Hallway
Smoke Alarms in All Bedrooms
40 Gallon Natural GAS Water Heater
Natural GAS High Efficiency Furnace c/w Electronic
Ignition
100 AMP Electric Service Panel
Electric Conduit Through Floor
Light Bulb Package
Living Room Wired for Ceiling Fan c/w Separate
Light Switch

