



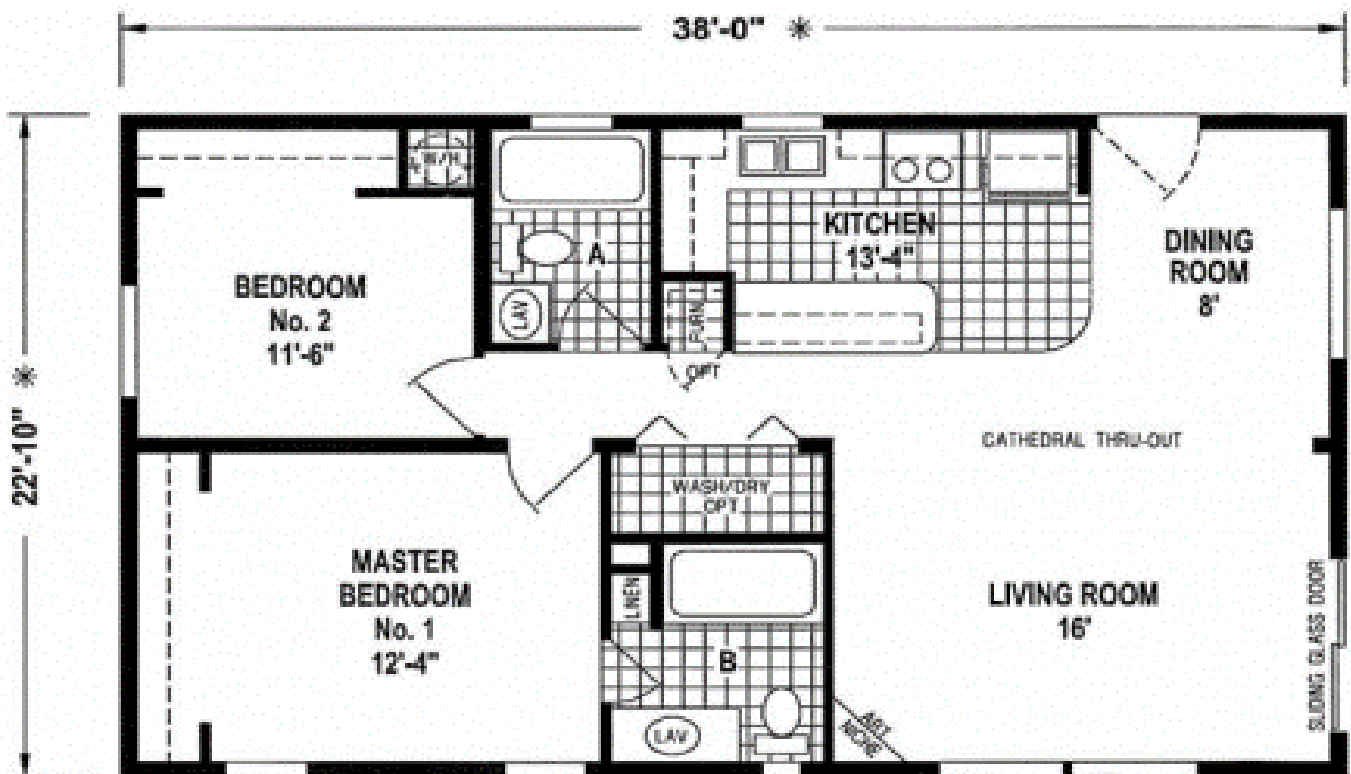
VI Modular Housing



**Picture above may differ from the floor plan on this brochure.*

Acavus

867 sq.ft.



E966CTM/3824 (867 SQ. FT.) 2BEDROOM - 2BATHS - CATHEDRAL THRU-OUT



www.vimodularhomes.com

250-324-2288



V I Modular Housing

Bay Springs Multi Module Series Standards

Living Areas:

Your Choice of 3 Interior Paint Colors
52" Ceiling Fan with Light in Living Room
Wood Cornice Valances on All Windows
 Except Bedrooms
 Metal Mini Blinds
Shaw Carpet with Rebound Pad
Decorative Chandelier in Dining Room

Kitchen:

Your Choice of 3 Natural Hardwood Cabinets
 (Oak, Ebusu, or Mahogany)
Lined Overhead Cabinets with Adjustable Shelves
Fully Extended Drawer System with Ball Bearing Guides
Residential Hidden Cabinet Doors Hinges
18 cf Double Door Frost Free Refrigerator
30" Deluxe Electric Range with Glass Door, Clock/Timer
Stainless Steel Sink with Single Lever Faucet & Sprayer
Full Backsplash Counter Top to Cabinets T/O Kitchen
Plumb for Ice Maker
3/4" Adjustable Shelves
USB Port

Bathrooms:

Your Choice of 3 Natural Hardwood Cabinets
 (Oak, Ebusu, or Mahogany)
Natural Hardwood Trimmed Mirrors w/Tulip Lights
60" x 42" Oval Fiberglass Tub/Shower in Master Bath
Single Lever Faucet at Sink
Single Lever Tub/Shower Faucet
Residential Hidden Cabinet Door Hinges
Humidistat
Elongated China Commodes
China Lavy Sinks
Residential Height Bathroom Counter Tops

Bedrooms:

Shaw Carpet with Rebound Pad
Overhead Lights with Separate Switch
Double Ventilated Wire Shelving in Closets
36" Interior Doors with Lever Handles
Metal Mini Blinds

Additional Features:

Board & Batt Exterior on Front Door Side
10' Dormer Centered Above Front Door
25-Year Shingles (Fiberglass-Class A Fire Rated)
 Choice of Colors
Vaulted Ceilings Throughout
2x4 Interior Walls with Double Marriage Walls
All Walls 16" O.C.
Residential Finished Drywall throughout
Baseboards Throughout
6-Panel Interior Doors with Lever Handles
Mortised hinges Throughout
Linoleum Floor at Entry
Electric Forced Air Furnace
Insulated Fiberglass Heat Ducts
Perimeter Heating System Throughout with
 Toe Kick Registers
40 Gal. Electric Water Heater Shut-off Valve
Residential PEX Waterlines
Plumb for Washer and Wire for Dryer
Wire for Freezer (Per Floor Plan)
36" 6-Panel Fiberglass Front & Rear Doors w/Deadbolt
 (Per Floor Plan)
Energy Star Rated Low "E" Vinyl Windows
Tongue & Groove OSB Decking
200 AMP Service Entrance
2x6 Sidewalls, 16" O.C.
2x8 Floor Joists, 16" O.C.
73.5# Ground Snow Load - CSA, MH
Exterior Receptacle With GFI Breaker
Code Insulation (R-28 Floor, R-22 Walls, R-40 Ceiling)
Wire Shelf over Washer/Dryer Area
Exterior Frost Free Faucet

