



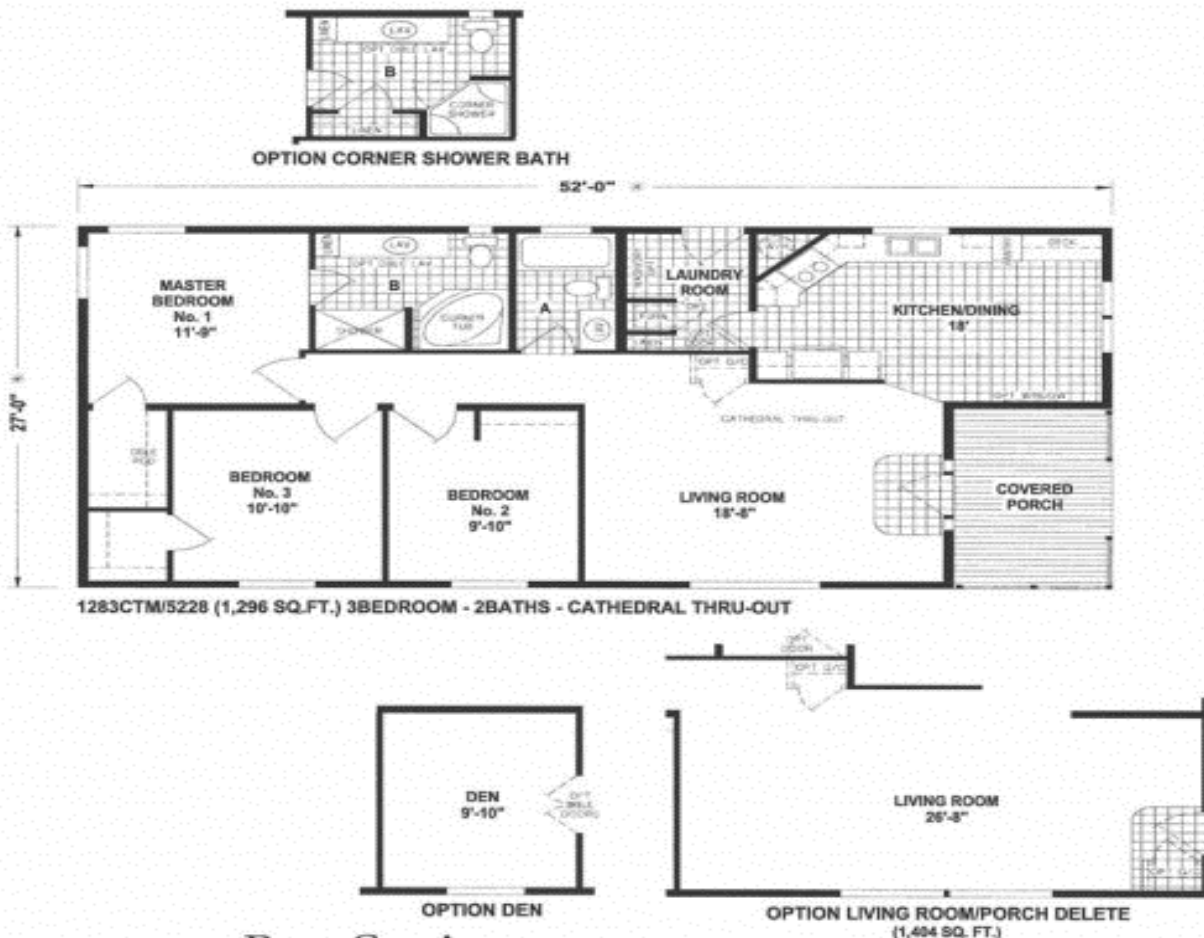
# VI Modular Housing



*\*Picture above may differ from the floor plan on this brochure.*

## Napoli

1296 sq.ft.



[www.vimodularhomes.com](http://www.vimodularhomes.com)

250-324-2288



# V I Modular Housing

## Bay Springs Multi Module Series Standards

### **Living Areas:**

Your Choice of 3 Interior Paint Colors  
52" Ceiling Fan with Light in Living Room  
Wood Cornice Valances on All Windows  
    Except Bedrooms  
    Metal Mini Blinds  
Shaw Carpet with Rebound Pad  
Decorative Chandelier in Dining Room

### **Kitchen:**

Your Choice of 3 Natural Hardwood Cabinets  
    (Oak, Ebusu, or Mahogany)  
Lined Overhead Cabinets with Adjustable Shelves  
Fully Extended Drawer System with Ball Bearing Guides  
Residential Hidden Cabinet Doors Hinges  
18 cf Double Door Frost Free Refrigerator  
30" Deluxe Electric Range with Glass Door, Clock/Timer  
Stainless Steel Sink with Single Lever Faucet & Sprayer  
Full Backsplash Counter Top to Cabinets T/O Kitchen  
Plumb for Ice Maker  
3/4" Adjustable Shelves  
USB Port

### **Bathrooms:**

Your Choice of 3 Natural Hardwood Cabinets  
    (Oak, Ebusu, or Mahogany)  
Natural Hardwood Trimmed Mirrors w/Tulip Lights  
60" x 42" Oval Fiberglass Tub/Shower in Master Bath  
Single Lever Faucet at Sink  
Single Lever Tub/Shower Faucet  
Residential Hidden Cabinet Door Hinges  
Humidistat  
Elongated China Commodes  
China Lavy Sinks  
Residential Height Bathroom Counter Tops

### **Bedrooms:**

Shaw Carpet with Rebound Pad  
Overhead Lights with Separate Switch  
Double Ventilated Wire Shelving in Closets  
36" Interior Doors with Lever Handles  
Metal Mini Blinds

### **Additional Features:**

Board & Batt Exterior on Front Door Side  
10' Dormer Centered Above Front Door  
25-Year Shingles (Fiberglass-Class A Fire Rated)  
    Choice of Colors  
Vaulted Ceilings Throughout  
2x4 Interior Walls with Double Marriage Walls  
All Walls 16" O.C.  
Residential Finished Drywall throughout  
Baseboards Throughout  
6-Panel Interior Doors with Lever Handles  
Mortised hinges Throughout  
Linoleum Floor at Entry  
Electric Forced Air Furnace  
Insulated Fiberglass Heat Ducts  
Perimeter Heating System Throughout with  
    Toe Kick Registers  
40 Gal. Electric Water Heater Shut-off Valve  
Residential PEX Waterlines  
Plumb for Washer and Wire for Dryer  
Wire for Freezer (Per Floor Plan)  
36" 6-Panel Fiberglass Front & Rear Doors w/Deadbolt  
    (Per Floor Plan)  
Energy Star Rated Low "E" Vinyl Windows  
Tongue & Groove OSB Decking  
200 AMP Service Entrance  
2x6 Sidewalls, 16" O.C.  
2x8 Floor Joists, 16" O.C.  
73.5# Ground Snow Load - CSA, MH  
Exterior Receptacle With GFI Breaker  
Code Insulation (R-28 Floor, R-22 Walls, R-40 Ceiling)  
Wire Shelf over Washer/Dryer Area  
Exterior Frost Free Faucet

