

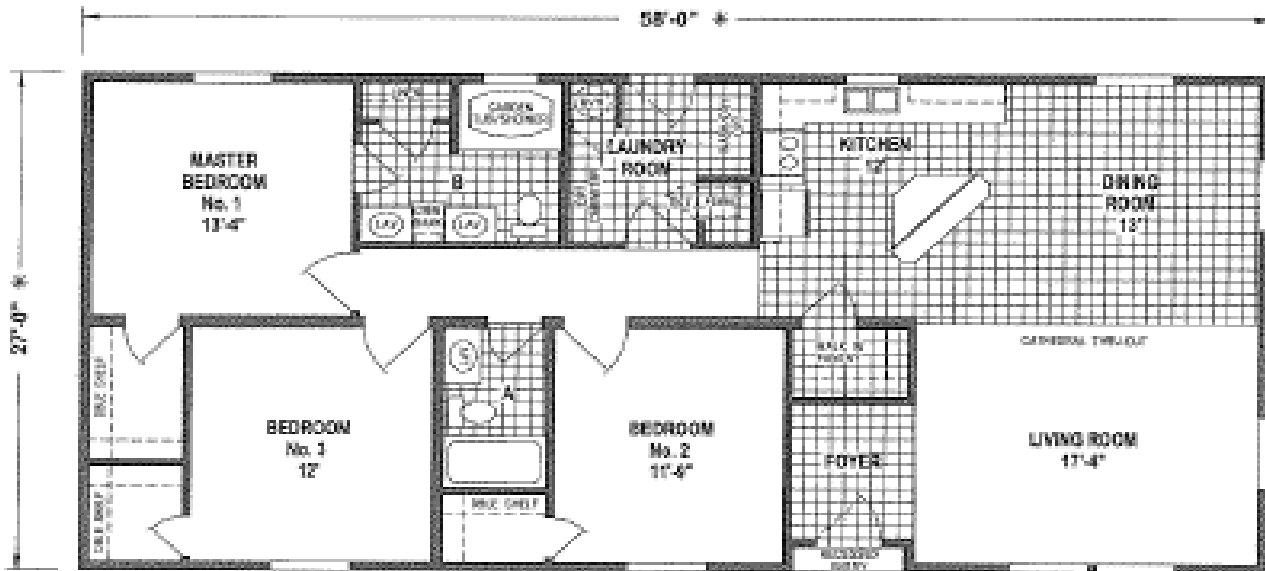


# VI Modular Housing



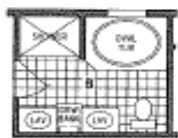
## Savannah

1566 sq.ft.



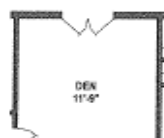
1245CTW/5828 (1,566 SQ. FT.) 3BEDROOM - 2BATHS - CATHEDRAL THRU-OUT

### Popular Options:



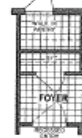
OPTION OVAL TUB BATH

Opt Bath \$1145  
Opt Tile Shower \$1500



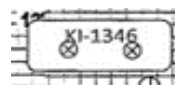
OPTION DEN

Opt Den \$????



OPTION GUEST CLOSET

Opt Closet  
\$280



Opt Island  
\$1,495



OPTION WALK-IN BAY & S.G.D.

Opt Walk-in Bay  
\$600



[www.vimodularhomes.com](http://www.vimodularhomes.com)

250-324-2288



# VI Modular Housing

## *Bay Springs Multi Module Series Standards*

### **Living Areas:**

Your Choice of 3 Interior Paint Colors  
52" Ceiling Fan With Light in Living Room.  
Wood Cornice Valances on all Windows  
    Except Bathroom  
Metal Mini-Blinds  
Shaw Carpet with 6 LB Rebound Pad  
Decorative Chandelier in Dining Room  
2"x4" Interior Walls w/ Double Marriage Walls  
    In Multi Sectionals ALL Walls 16" O.C.

### **Kitchen:**

Your Choice of 3 Natural Hard Wood Cabinets  
    Oak, Ebusu or Mahogany  
Lined Overhead Cabinets w/Adjustable Shelves  
Fully Extended Drawer System  
    w/Ball Bearing Guides  
Residential Hidden Cabinet Door Hinges  
18 Cu. Ft. Double Door Frost Free Refrigerator  
30" Deluxe Electric Range w/Glass Door, Clock  
    and Timer  
Stainless Steel Sink w/Single Lever Faucet  
    & Sprayer  
Full Backsplash "Counter Top to Cabinets  
    Throughout Kitchen  
Plumb for Ice Maker  
3/4" Adjustable Shelves  
USB Port

### **Bathrooms:**

Your Choice of 3 Natural Hard Wood Cabinets  
    Oak, Ebusu or Mahogany  
Natural Hard Wood Trimmed Mirrors  
    w/Tulip Lights  
60"x42" Oval Fiberglass Tub/Shower in Master Bath  
60" Fiberglass Tub/Shower Combo in Hall Bath  
Single Lever Faucet at Sink  
Single Lever Tub/Shower Faucet  
Residential Hidden Cabinet Door Hinges  
Humidistat in Baths  
Elongated China Commodes  
Residential Height Bathroom Counter Tops

### **Bedrooms:**

Shaw Carpet with 5/8 Rebound Pad  
Ceiling Lights w/Separate Switch  
"Double" Ventilated Wire Shelving in Closets  
36" Interior Doors w/Lever Handles  
Metal Mini-Blinds

### **Additional Features:**

Board & Batt Exterior on Front Door Side  
    with Vertical Siding on remaining Sides  
10' Dormer Centered Above Front Door  
25-Year Shingles (Fiberglass-Class A Fire Rated)  
    Choice of Colors  
Vaulted Ceilings Throughout  
Residential Finished Dry Wall Throughout  
6-Panel Interior Doors w/Lever Choice Of Colours  
Linoleum Floor at Entry  
Electric Forced Air Furnace  
Insulated Fiberglass Heat Ducts  
Perimeter Heating System Throughout  
    w/Toe-Kick Registers in Kitchen & Bathrooms  
40 Gal. Gas or Electric Water Heater  
Whole House Water Shut-off Valve  
Residential Pex Waterlines  
Toe-Kick Registers in Kitchen & Bathrooms  
Plumb for Washer Wire for Dryer  
Wire for Freezer per Floor Plan  
36" 6 Panel Fiberglass Front & Rear Door  
    w/Deadbolts  
Energy Star Rated Low "E" Vinyl Windows  
3/4" OSB Floor Decking  
200 Amp Service Entrance  
2 x 6 Sidewalls, 2"x8" Floor Joist in Multi  
    Sectional/ 2"x10" Single Section ALL 16" O.C.  
75.3 Ground Snow Load Roof  
Exterior Receptacle w/GFI Breaker  
Insulation (R-28 Floor, R-22 Walls & R-40 Ceiling)  
Wire Shelf Over Washer/Dryer Area  
Exterior Frost Free Faucet



**www.vimodularhomes.com**

**250-324-2288**