



VI Modular Housing



Built Right



On Time



On Budget



**DISPLAY
HOME**



**Picture above may differ from the floor plan and Options listed on this brochure.*

Park Model Villa

H902CT
504 sqft ~ 1 Bedroom



OPTION CORNER SHOWER BATH



OPTION ENT CENTER



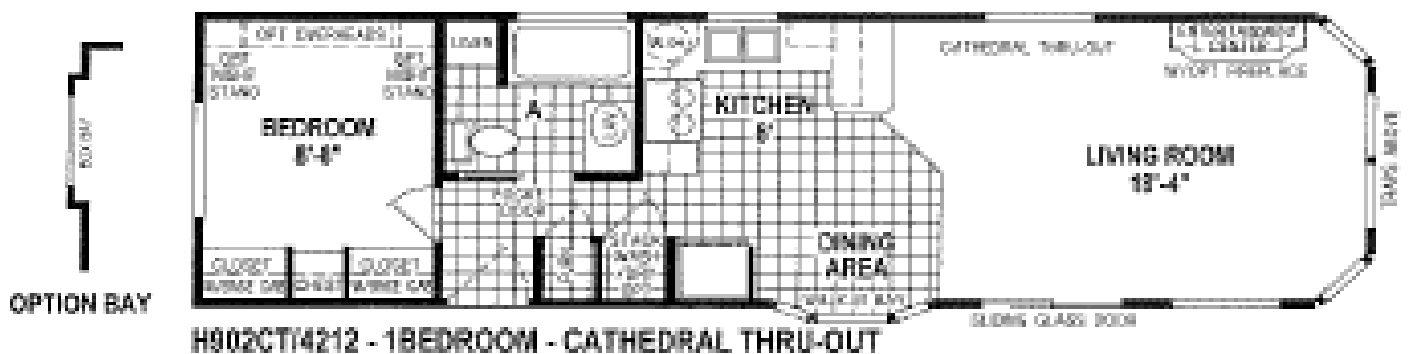
OPTION DEN



OPTION ELECT. FIREPLACE



OPTION ROADSIDE CLERESTORY



H902CT4212 - 1BEDROOM - CATHEDRAL THRU-OUT



OPTION WARDROBE



ALTERNATE WARDROBE



OPTION CURBSIDE CLERESTORY



OPTION ENDWALL WS.G.D.



www.vimodularhomes.com

250-324-2288



VI Modular *Housing*

Park Model Villa Series Standards

Living Areas:

Carpet
Valances with Wood Blinds
Chandelier Dining Light
TV Jack
Phone Jack
52" White Paddle Fan with Lights

Kitchen:

Vinyl Flooring
Flat Panel Cathedral Top Oak Cabinets
with Hidden Hinges
Lined Overhead Cabinets
Adjustable Overhead Shelves
Counter Top Backsplash
Stainless Steel Double Sink
Single Lever Faucet with Sprayer
18 cu.ft. Double Door Frost Free Refrigerator
30" Deluxe GAS Range with
Microwave Range Hood
Overhead Cabinet Above Refrigerator
3/4" Adjustable Shelves
USB Port

Bathrooms:

Vinyl Flooring
Decorative Mirror with Strip Light
Towel Bar and Paper Holder
54" One-Piece Fiberglass Tub/Shower Combo
with Over Drape
Flat Panel Cathedral Top Oak Cabinets
China Lavy Bowl with Pop-up Drain
Elongated Toilet Bowl
Counter Top Backsplash

Bedroom:

Carpet
Valance with Metal Mini-Blinds
Ceiling Light
Wardrobe with Drawers Below
Ventilated Wire Shelving
TV Jack
Phone Jack

Additional Features:

CSA-A241 Approved
Finished Drywall Throughout w/Rounded Corners
6 Panel Doors with 3 Hinges
Brushed Chrome Lever Door Handles and Hinges
7'6" Interior Sidewalls
Painted Baseboard Trim
Silent Rocker Light Switches
6 lb. Carpet Pad
20 Gallon Electric Water Heater with
Interior on/off Switch
Water Shut-off Valves Throughout
56K BTU GAS Furnace
Fiberglass Board Heat Ducts
Toe Kick Heat Registers in Kitchen and Bath
50 AMP Electrical Panel
Power Cord
40 lb. Engineered Panel
2x4 Sidewall, 16" O.C.
2x8 Floor Joist, 16" O.C.
72" Sliding Glass Door (Per Floor Plan)
36" 6 Panel Rear Door with Deadbolt
(Per Floor Plan)
Exterior Light at All Exterior Doors
Exterior GFI
25 Year Composition Roof
Roof Ice Guard
12" Front and Rear Eaves
8" Sidewall Eaves
Cathedral Ceiling Throughout
Fire Extinguisher
Smoke Detector with Battery Backup and False
Alarm Control
GAS Detector with GAS Appliances
Detached Hitch
Hardie CemPanel Exterior with Hardie
CemPlank Wainscot
Low "E" Vinyl Framed Dual Glazed Windows
Egress Windows in Bedrooms
R-33, R-11, R-14 Insulation

